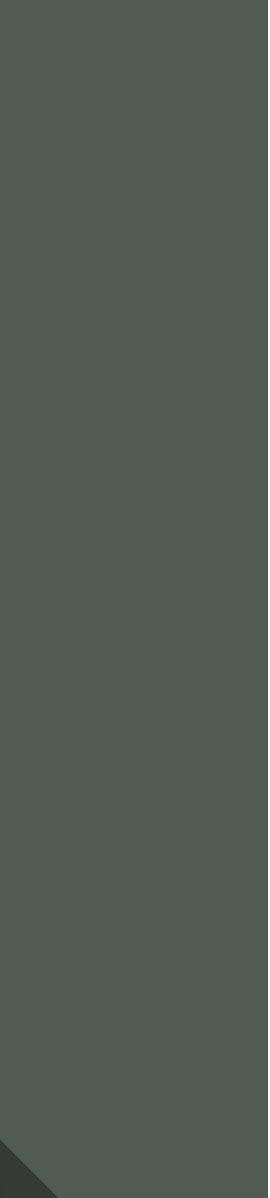


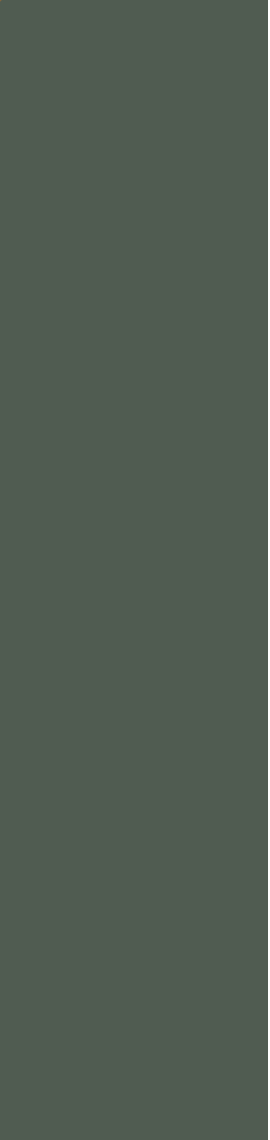
A

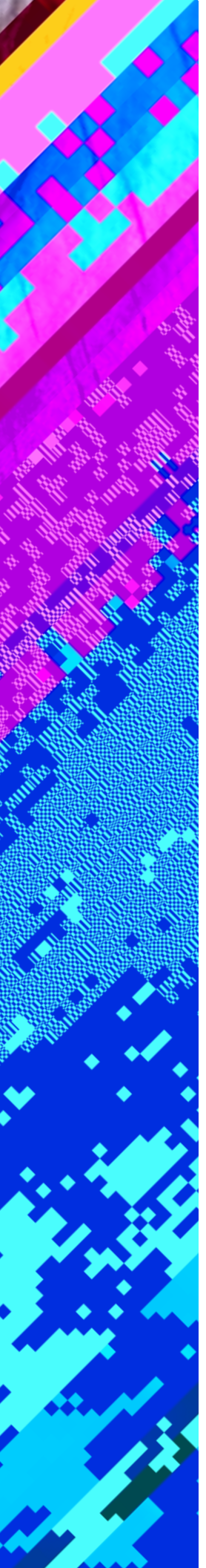
C 7 C

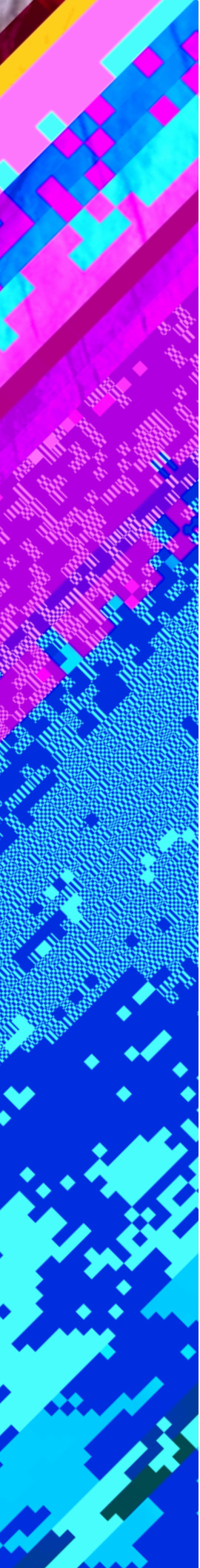
7

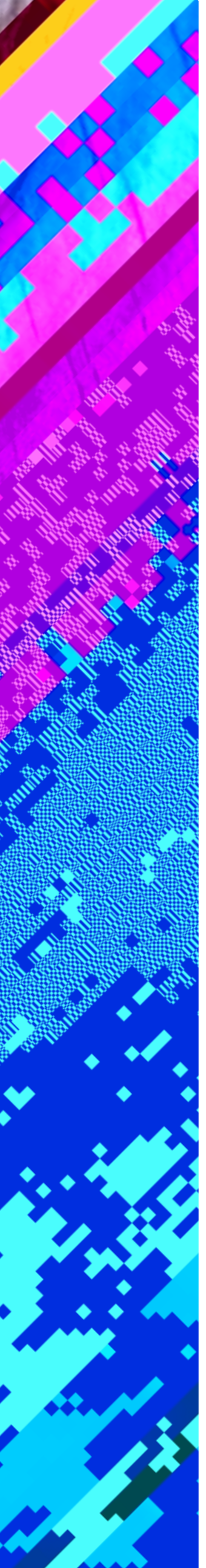












C 3:

Goal

... A ... N ... E ...

Actions

... D ... C ... AECC ... H ... Abo iginal HR Be P ac ice Repo ... M, N, G ... M ... A ... A ... C ...

C 4: E

Goal

... (EL IN E WILNEW) ...

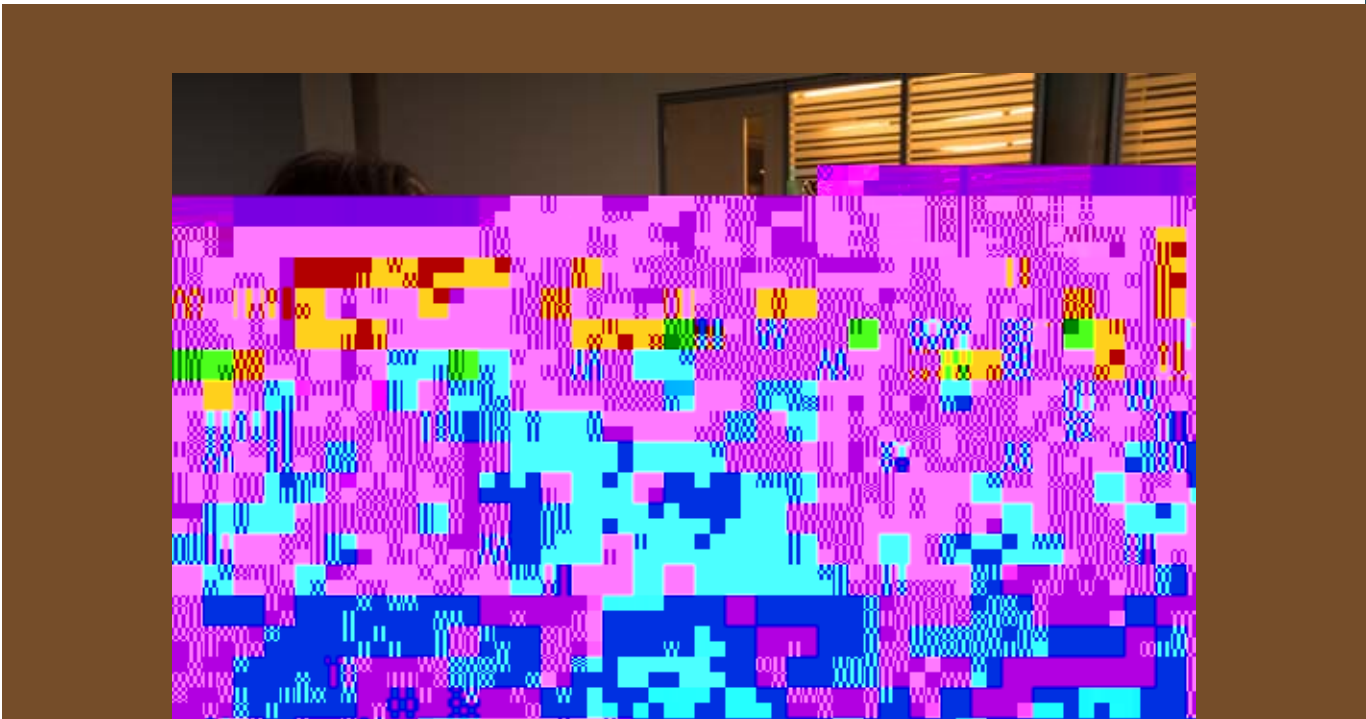
Actions

A, EL IN E WILNEW ... D ... EL IN E WILNEW ... C ... H ... & ... C ... D ... C ...

G / /OZ M

F ... 2012 2015, ... A ... D: ... A ... OZ ... OZ ... 22.

- Project Co-Sponsors:** ... L ... A ... D ... A ... E ... & C ...
- Indigenization Steering Committee** ...
- ASP Community Advisory Committee** ... 20 ... A ... N ...
- Project Leader:** C ... M ...
- Faculty from the Centre of Excellence for Teaching & Learning, schools, and departments** ...
- Project Work Team** ... M ... C ...
- Project Support:** D ... A ... D ... AECC, ...



Challenges

Lack of resources to support on-going presence and/or delivery of some critical ASP initiatives

- A... C... A... (IH CA).

Lack of resources, time and/or capacity - A... A... /

Differences in needs and interests - A... A... /

Distance to communities/lack of good transit - N... j... /

Limited connections to the Métis community - M... N... BC... F... M... N... G... /

Opportunities

Continued support from senior management - C... C... 2011-2014

Great results already - A... A... 40% (200...)

The new ASP Community Advisory Committee - A... CAC... 2011... 2012.

Nam(C)fommunicatsfommuntabmion,TJ/T13 1 Tf(W)6(e establil Comme Mé a commitmento2(Advisory C)10(ommit)10(t)10- % Tf0 -GMé0-t to ip.)J/T13 Tf0 -2 TD[rk Tmd Co r cat -2 TD[muT* April commit)10(t)10(eed u0(eather canv)10(e 8tmer

VING - C... I... C... N... G... (ING),... N... (CMN)...

Lessons

We need to continue to focus on employee learning and making our campus more welcoming to Aboriginal learners - A... A... BZ...

Each Aboriginal community has its own unique needs - /

It is better to collaborate - A... A... /

Effective collaboration requires educated representatives - A... C... /

Partnership is possible - / ()... A... /

A D-
I A A O O O

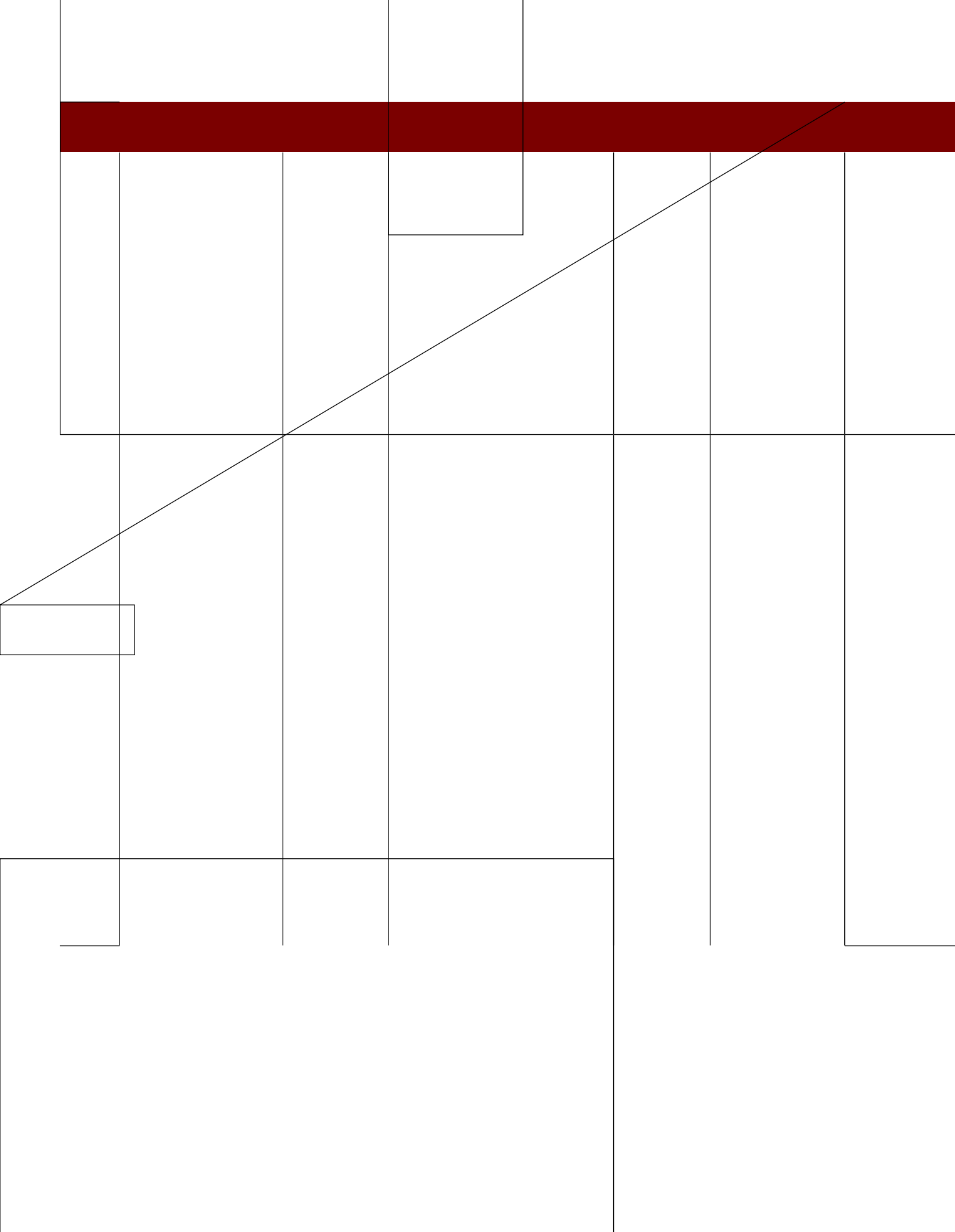
Minimum Funding Activities

ASP Goal*	Proposed Activity & Description	Activity Category	Rationale	Logistics	Anticipated Outputs	Anticipated Outcomes
1	E C E E C A N		A M C A E A Suppo Goal 1/Objective 1: A	E ! /931:/AA \$/@7/B C H C I=5/53 A	9E E-B@1BE B = 1/<>CA =B3:/=2 24 B=2 13@<:=7BA	
1	E C C C E		H C E A Suppo Goal 1/Objective 1: A	.2 C 1632C3 E ! /=53 " C@C E (3/16 C E	C +; @E B@B3 1:23A E /A .70 J E F (

ASP Goal*	Proposed Activity & Description	Activity Category	Rationale .TJ2			

ASP Goal*	Proposed Activity &					

ASP Goal*	Proposed Activity & Description	Activity Category	Rationale	Logistics	Anticipated Outputs	Anticipated Outcomes
2	Aboriginal Community Projects Coordinator: C A C C C A		<p>1: @7/BB2/=2; 1 3@2=332A</p> <p>2: 1C<3=BB2 32C1/BB /=2 BB7-75</p> <p>63:>32 1; <<C=BB23DB3; >BB37@</p> <p>2,</p> <p>Suppo :</p> <p>Goal 2/Objective 1:</p> <p>D</p> <p>Goal 2/Objective 2:</p> <p>E</p> <p>A</p>	<p>5 7,</p> <p>C</p> <p>! 33B7</p> <p>A3AA; <<C=BB</p> <p>AECCT</p> <p>1/</p> <p>@7/BB</p> <p>1</p> <p>7</p> <p>\$@>/@</p> <p>A CACT</p> <p>2 /</p> <p>D</p>	<p>C</p> <p>! 33BE BB//</p> <p>15</p> <p>C</p> <p>A3AA; <<C=BB</p> <p>AECCT</p> <p>1/</p> <p>\$@>/@/=2 417B/BB</p> <p>A CACT</p>	<p>G</p> <p>C</p> <p>A</p> <p>15</p> <p>A</p>



Activity	Pre-ASP	Year 1	Year 2	Year 3	Legacy	Access, Retention, Completion	Relevance & Receptivity	Partnership Engagement
I... C... M...								
E... E...								
EL IN... WILNEW (...)								
E... E...								
I... 7								
C... H... &... C								
D7								
H... I... H...								
C... /...								
...								
H7								
C7... A								
G... F...								
M...								
N... 13A								
... 44 ... 4 ... 4								



